



Environmental Health I

Session 3

Leader SALTA



EHC Mission Statement

**We organize and advocate to
protect the public health and
the environment threatened by
toxic pollution.**

Health



Government



Corporate Accountability



SALTA

Environmental Health, Leaders Taking Action

**(Salud Ambiental,
Líderes Tomando Acción)**

Healthy Environment

SALTA
COMMUNITY
LEADERSHIP
TRAINING PROGRAM

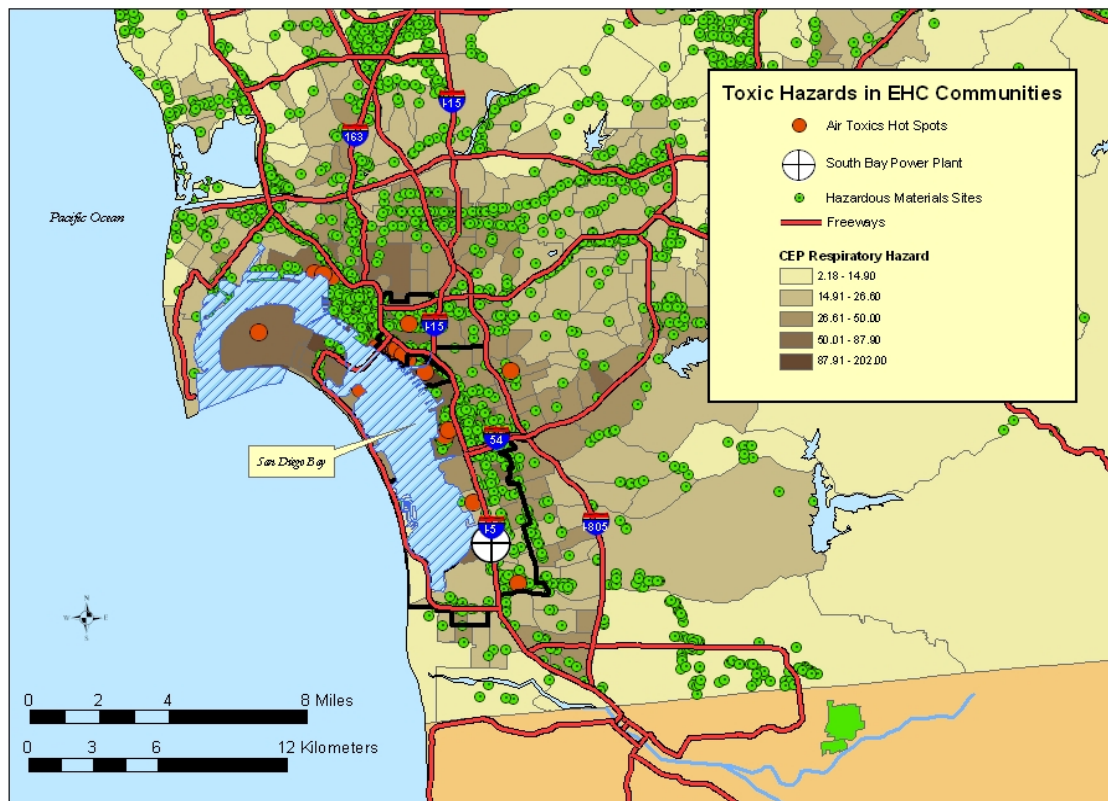


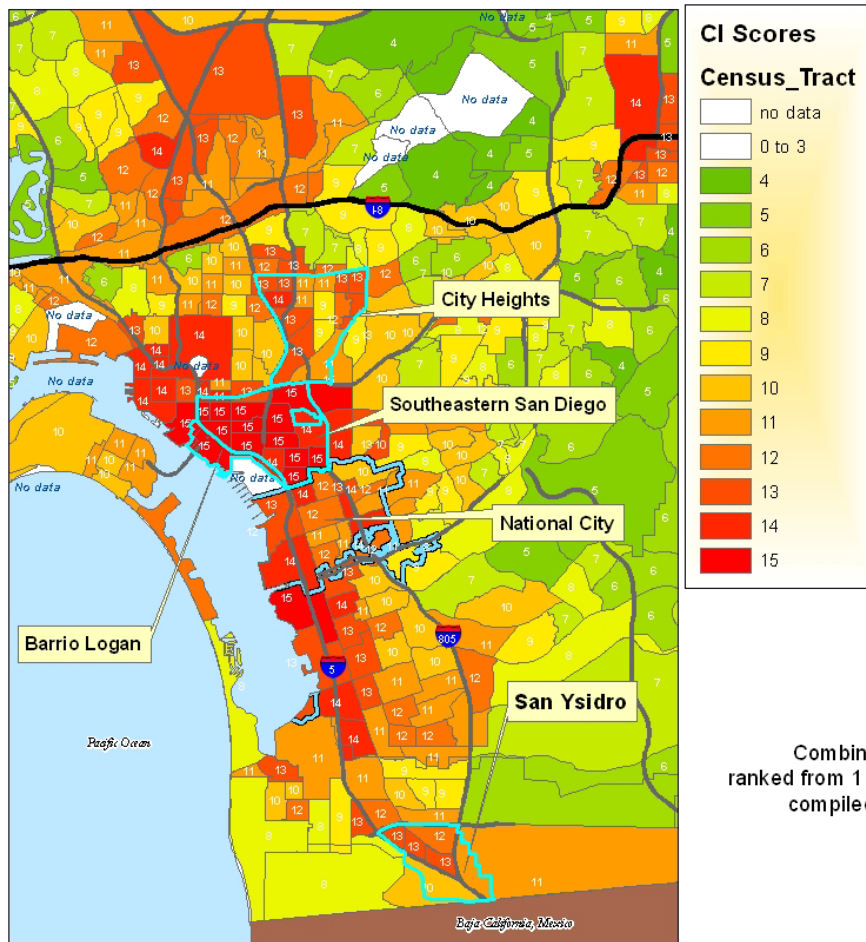
NOT Healthy Environment



Environmental Health Definition







Combined cumulative impacts indicators, ranked from 1 to 15 (Least impacted to most impacted) compiled at the census tract level. DRAFT.









ENGINEERED FOR
GREATER PROTECTION
AGAINST BREAKDOWN

Castrol
GTX

SAFETY OIL

WEST COAST
AUTOMOTIVE
West coast
474-0777

Castrol
THE TECHNOLOGY LEADER

NAPA AutoCare
Center
We install Quality NAPA Parts

CERTIFIED
WIPER
CENTER
Braking System & Wheel Inspection

TOW AWAY
If You Need Towing
We'll Tow You
At Any Time
& Any Place
24 HOURS
CALL 619-298-0000
WESTERN AUTO
TOWING 24/7
619-298-0000
Call Any Day

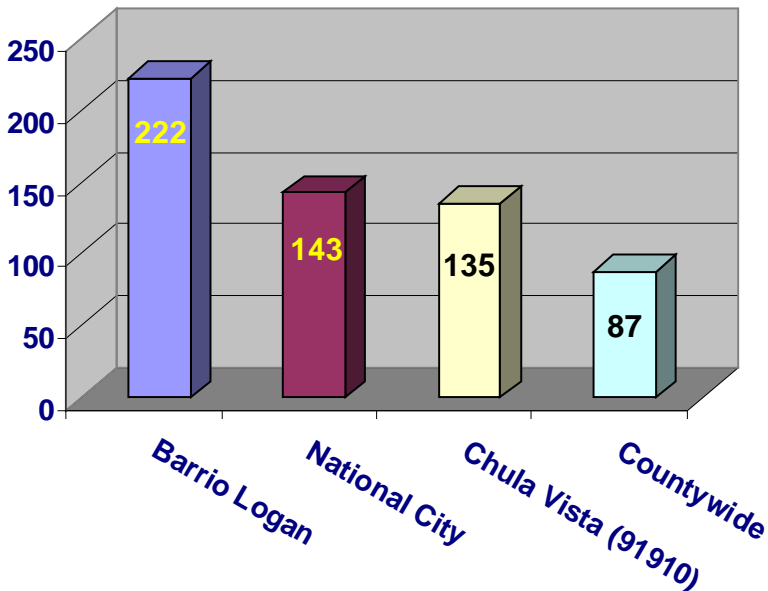
Routes of Exposure



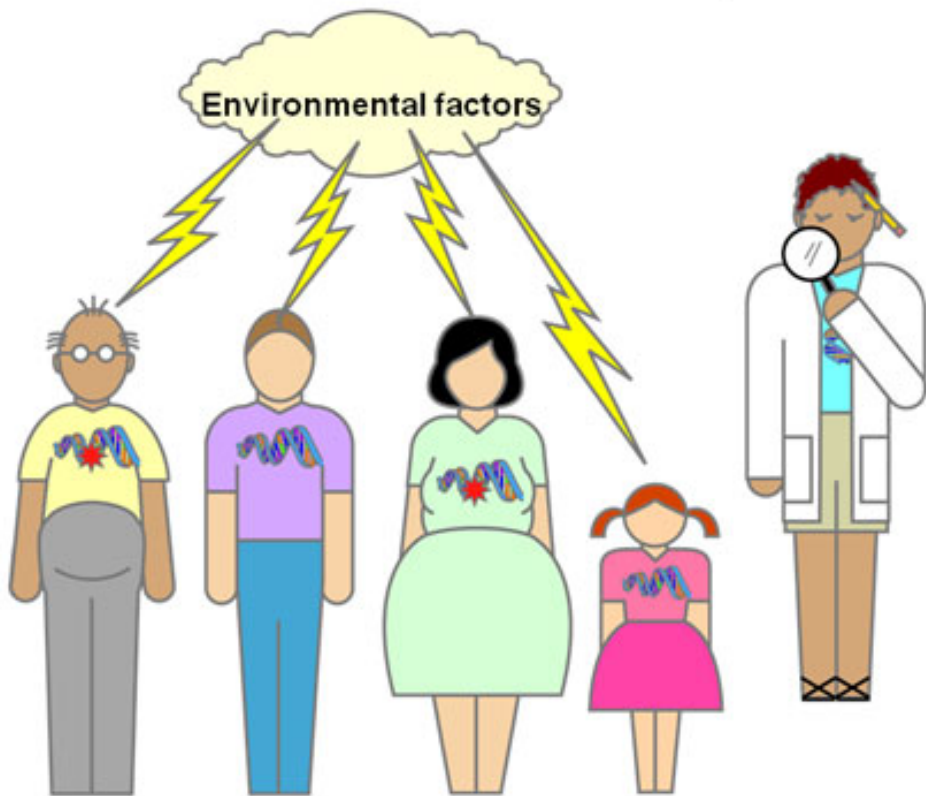
Asthma-Related Hospitalizations

Children 0-17 in 2008

Numbers per 100,000



Chance of Cancer? It Depends...

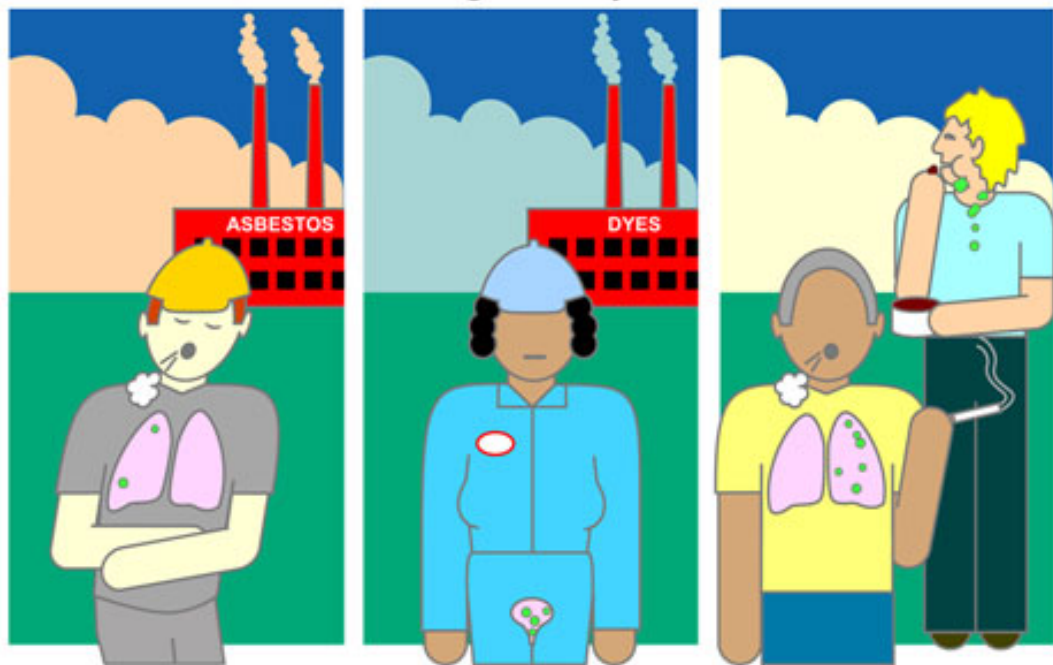


Environmental Carcinogens: The “Nasties” Lineup



Different Exposures, Different Rates and Risks

Carcinogenic Exposures



■ = cancer

We now take you to Betty's Nail and Hair Salon...



Prop 65 Warning

**This area contains
a chemical known
to the state of
California to
cause cancer and
birth defects or
other reproductive
harm.**

**Esta área contiene
un componente
químico que se
conoce en el estado
de California como
causante de cáncer
y defectos
congénitos y otros
daños al sistema
reproductor.**

Hazardous Materials in Use

MSDS Information

5. ENTRY

Before entering a confined space, you must be properly trained and authorized. You must also follow the entry permit system. This system ensures that all safety precautions are followed before anyone enters the space.

6. SPECIAL PROTECTION

Before entering a confined space, you must be properly trained and authorized. You must also follow the entry permit system. This system ensures that all safety precautions are followed before anyone enters the space.

7. ENTRY

Before entering a confined space, you must be properly trained and authorized. You must also follow the entry permit system. This system ensures that all safety precautions are followed before anyone enters the space.

8. SPECIAL PROTECTION

Before entering a confined space, you must be properly trained and authorized. You must also follow the entry permit system. This system ensures that all safety precautions are followed before anyone enters the space.

ABSORBER MATERIAL SAFETY DATA SHEET

SECTION 1 - NAME & PRODUCT ABSORBER PRODUCTS CO. ATTN: JAMES 242 RIZON DR. OLYMPIA, SPED REHICANT COUNTRY, PA. 17055		IN CASE OF EMERGENCY PHONE 717-766-6661 24 HOURS TOLL FREE March 27, 1991 DATE OF THIS DOCUMENT DATE OF THIS DOCUMENT	
GENERAL NAME, TRADE NAME AND FUNCTION PETROLEUM-FUEL BULK OXIDIZING TREATMENT FORMULA OF PRIMARY COMPONENTS (STRUCTURALLY) (proprietary compounds)		FOR LATEST DATA, SEE MULTI-TRANSACTURE RECORD OF THIS DOCUMENT OFFICIAL	
SECTION 2 - INGREDIENTS		%	FLV UNITS
Proprietary compounds effective for purposes claimed		100	NA
SDS hazard (Section 311/312): None noted Title III Section 313: not listed			
SECTION 3 - PHYSICAL DATA			
a. boiling point (at 20 mm Hg)		b. SPECIFIC GRAVITY (20°/20°)	
400-450		0.88-0.88	
c. vapor pressure (mm Hg @ 20°)		d. VISCOSITY (cP @ 20°)	
NA		NA	
e. solubility in water		f. solids and sediments	
insoluble		slimy, mild	
g. pH		h. reaction, state	
insoluble		liquid	
SECTION 4 - TOXIC AND ENVIRONMENTAL HAZARD DATA			
a. TOXICITY DATA (SEE TESTS)		b. PERMEATION CHARACTER	
U.S. EPA		U.S. EPA	
c. EXHAUSTION		d. EXHAUSTION	
U.S. EPA		U.S. EPA	
SECTION 5 - REACTIVITY DATA			
a. REACTIVITY DATA		b. REACTIVITY DATA	
U.S. EPA		U.S. EPA	
SECTION 6 - REACTIVITY DATA			
a. REACTIVITY DATA		b. REACTIVITY DATA	
U.S. EPA		U.S. EPA	
SECTION 7 - REACTIVITY DATA			
a. REACTIVITY DATA		b. REACTIVITY DATA	
U.S. EPA		U.S. EPA	
SECTION 8 - REACTIVITY DATA			
a. REACTIVITY DATA		b. REACTIVITY DATA	
U.S. EPA		U.S. EPA	
SECTION 9 - REACTIVITY DATA			
a. REACTIVITY DATA		b. REACTIVITY DATA	
U.S. EPA		U.S. EPA	
SECTION 10 - REACTIVITY DATA			
a. REACTIVITY DATA		b. REACTIVITY DATA	
U.S. EPA		U.S. EPA	
SECTION 11 - REACTIVITY DATA			
a. REACTIVITY DATA		b. REACTIVITY DATA	
U.S. EPA		U.S. EPA	
SECTION 12 - REACTIVITY DATA			
a. REACTIVITY DATA		b. REACTIVITY DATA	
U.S. EPA		U.S. EPA	
SECTION 13 - REACTIVITY DATA			
a. REACTIVITY DATA		b. REACTIVITY DATA	
U.S. EPA		U.S. EPA	
SECTION 14 - REACTIVITY DATA			
a. REACTIVITY DATA		b. REACTIVITY DATA	
U.S. EPA		U.S. EPA	
SECTION 15 - REACTIVITY DATA			
a. REACTIVITY DATA		b. REACTIVITY DATA	
U.S. EPA		U.S. EPA	
SECTION 16 - REACTIVITY DATA			
a. REACTIVITY DATA		b. REACTIVITY DATA	
U.S. EPA		U.S. EPA	
SECTION 17 - REACTIVITY DATA			
a. REACTIVITY DATA		b. REACTIVITY DATA	
U.S. EPA		U.S. EPA	
SECTION 18 - REACTIVITY DATA			
a. REACTIVITY DATA		b. REACTIVITY DATA	
U.S. EPA		U.S. EPA	
SECTION 19 - REACTIVITY DATA			
a. REACTIVITY DATA		b. REACTIVITY DATA	
U.S. EPA		U.S. EPA	
SECTION 20 - REACTIVITY DATA			
a. REACTIVITY DATA		b. REACTIVITY	

IDENTITY:	HC-123a HC-22a		Compressed Gas - Flammable NOS Liquefied Petroleum UN 1845 Class 2		24-Hour Emergency Telephone Number (901) 755-3067	
Section I:						
Manufacturer's Name			Emergency Telephone Number (800) 887-7000			
OE Technology, Inc.			Telephone Number for Information (505) 887-7000			
Address			Date Prepared			
1927B H. Church Rd. Rapidan, VA 22086, U.S.A.			April 11, 2002			
			Signature of Preparer (optional)			
			Not Applicable			
Section II: Hazardous Ingredients / Identity Information						
Hazardous Components (Specify Chemical Identity; Common Name(s)) Tetra Secret HC-123a/HC-22a Compressed Hydrocarbon Mixture			OSHA PEL ACGIH TLV/TWA		Other Limits Recommended	% (System)
			TWINPEL OSHA		1800 kg	100%
			Asphyxiant			
Section III: Physical Safety Characteristics						
Boiling Point HC-123a: 29.9°F / HC-22a: -48°F			Specific Gravity (P/L = 1) 0.500			
Vapor Pressure (atm) HC-123a: 7.0 @ 70 °F / HC-22a: 110 @ 70°F			Mixing Ratio Not Applicable			
Vapor Density (air = 1) 1.70			Evaporation Rate (Ethyl Acetate = 1) Not Available			
Solubility in Water Soluble			Ignition Temperature (Method used: Heated Metal Surface) 1400° F.			
Appearance and odor Colorless gas with natural gas odor			Auto-Ignition Temperature 1622° F.			
Section IV: First Aid and Exposure Hazard Data						
From Label (Method Used) Not Determined			Flammable Limits % Upper 8.0 % Lower 1.9		LMS N/A	MEL N/A
Extinguishing Media Use a water spray to cool fire-exposed containers, shuttles, and to protect personnel from radiant heat.						
Special Fire Fighting Procedures Shut off source of flow. Do not extinguish if it flows except cannot be shut off. Use water spray to disperse gas or vapor and to protect personnel attempting fire escape route.						
Reactivity and Corrosive Properties Heavy concentrations of vapor may form flammable mixtures with air. Heavy concentrations of vapor or gas may cause irritation of eyes and skin. Vapor or gas may accumulate in the low or confined areas. Containers when exposed to flame or high temperature conditions. Containers may rupture when heated above design pressure.						

Product Name	OxiOut™ Algae and Mold Stain Remover
Supplier's Name	OxiBrands
Address (City, State, Zip)	37654 Amrhein, Livonia, Michigan 48150, USA
Manufacturer's Name	OxiBrands
Address (City, State, Zip)	37654 Amrhein, Livonia, MI 48150, USA
Emergency Telephone Number	1-800-442-7258

Ingredients	Wt. Percent	CAS #
Sodium Percarbonate	40-85	15630
Sodium Carbonate	10-15	97-19-8

Potential Health Effects	
General	Irritating to mucous membrane, eyes and skin. May cause skin irritation
Inhalation	Irritating to the respiratory tract. Coughing, sneezing, difficulty breathing and sore throat
Eye Contact	May cause irritation to the eyes, including pain, redness, and reversible damage
Skin Contact	Slight irritation
Ingestion	Vomiting and diarrhea

Inhalation	Move the affected person to fresh air. Seek medical attention if effects persist.
Eye Contact	Flush eyes with running water for at least 15 minutes with eyelids held open. Seek specialist for advice.
Skin Contact	Wash affected skin with soap and mild detergent and large amounts of water. If irritation persists seek medical attention.
Ingestion	If the person is conscious and not convulsing, give 2-4 cupfuls of water to dilute the chemical and seek medical attention immediately. Do not induce vomiting.

Flash Point	Not applicable
Flammability	Not applicable
Ignition Temperature	Not applicable
Danger of Spontaneous Combustion	Not applicable
Explosive Media	Not explosive
Poison Hazards	Water

Danger of Storage: Vessels involved in a fire may vent gas or rupture due to internal pressure. Damp material may decompose exothermically and ignite combustibles. Oxygen released due to exothermic decomposition and may support combustion. May ignite other combustible materials. Avoid contact with strong acids or bases, combustibles (e.g., oil, grease, paper, clothing, etc.). Thermal decomposition releases oxygen and heat. Pressure bursts may occur due to gas evolution. Pressurization if confined when heated or decomposing. Containers may burst violently.

First Aid Measures: Evacuate all personnel.

Personal Protection: Wear protective clothing and self-contained breathing apparatus. Use water spray to cool from outside of container.

Prop 65 Warning



CHILDREN AT RISK









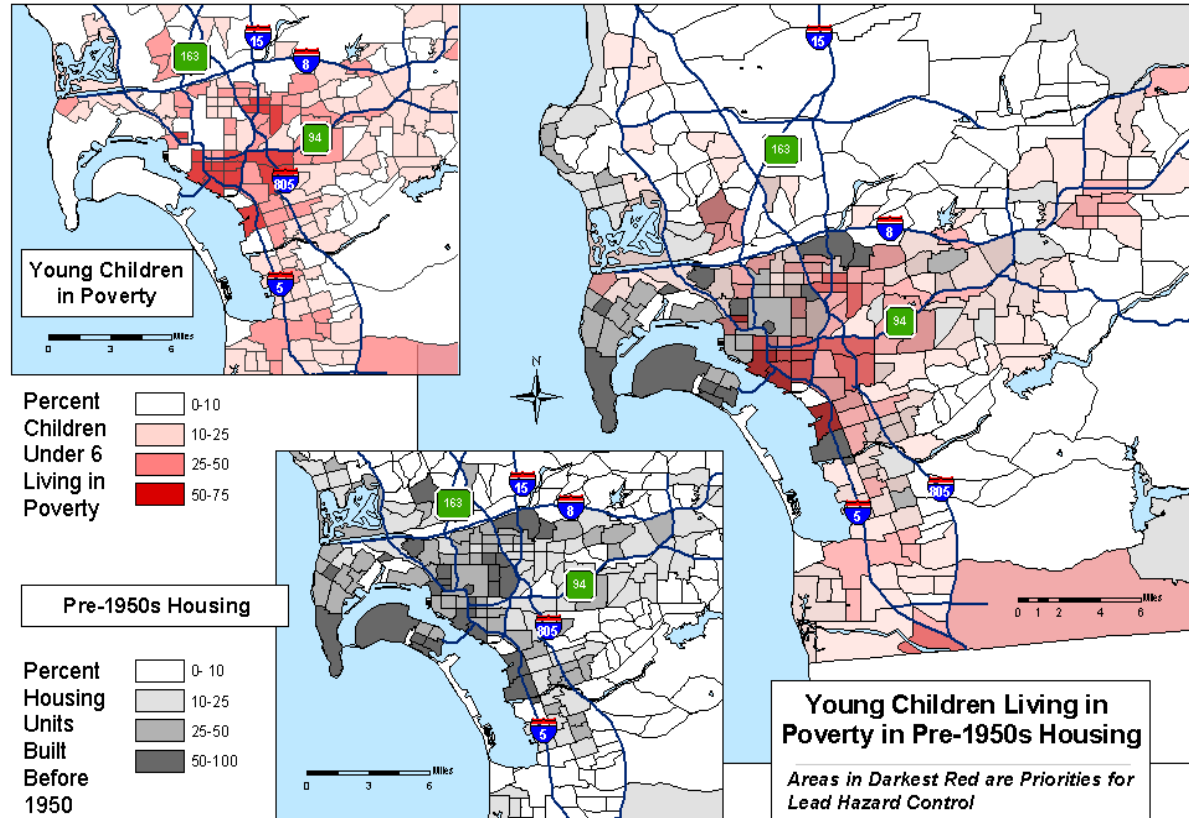












Children at Risk for Lead Poisoning San Diego

Source: Centers for Disease Control and Prevention, based on 1990 U.S. Census data

Notes: Values are by census tract, Census tracts where children under 6 numbered < 20 excluded

Map by Environmental
Health Coalition, 2002

Evaluation